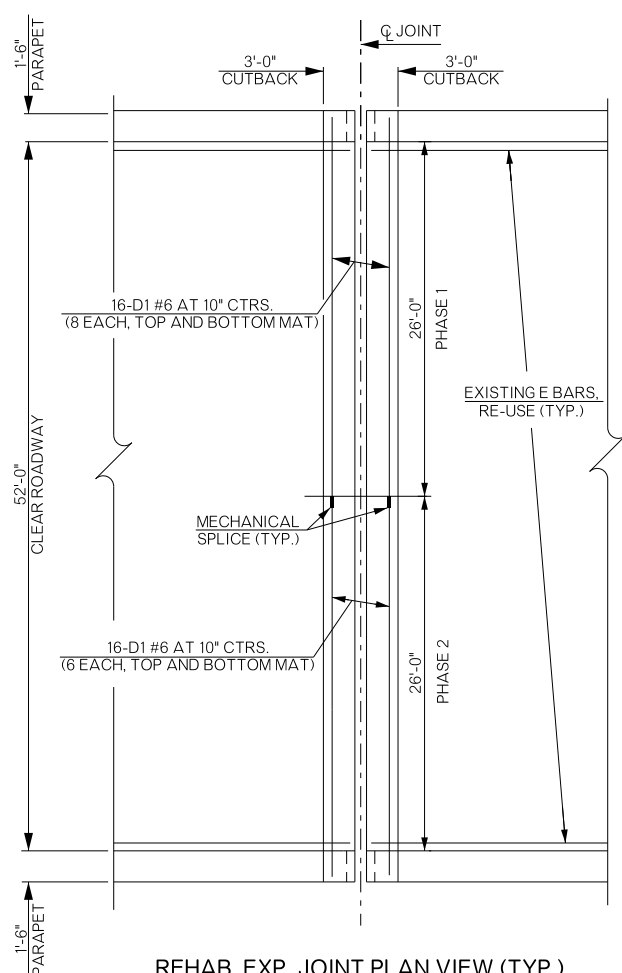
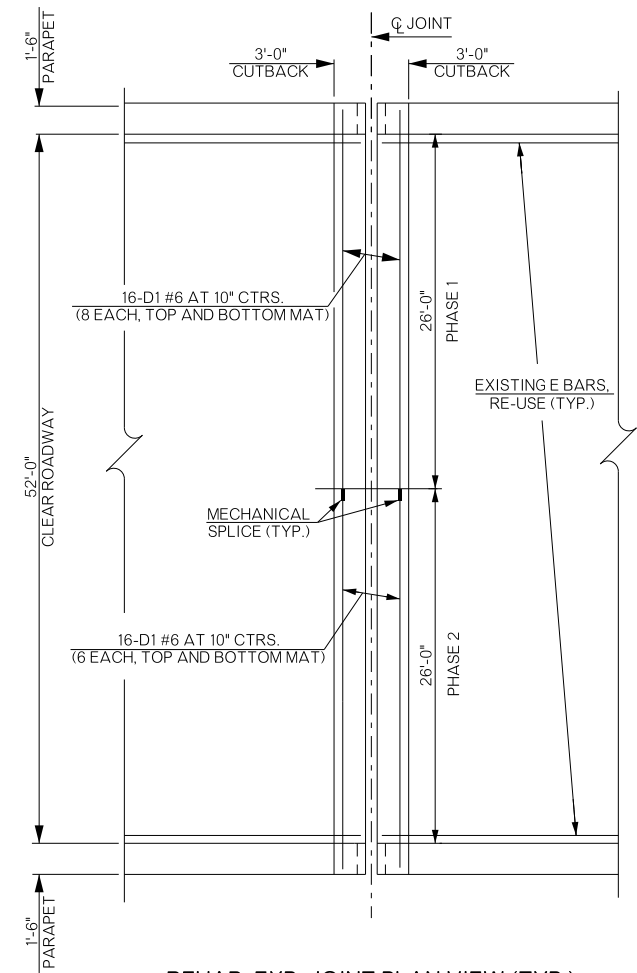


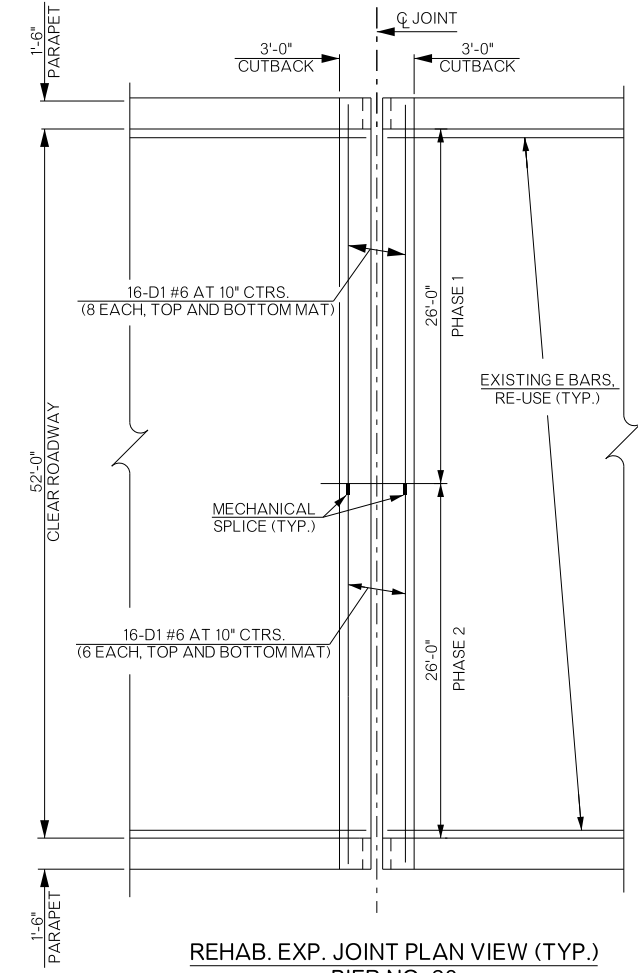
REVISIONS		
REV. NO.	DESCRIPTION	DATE



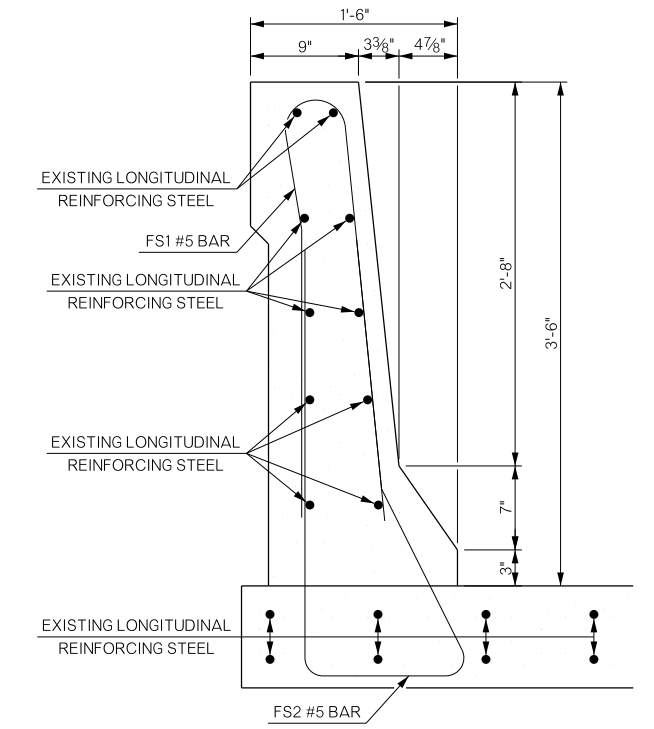
REHAB. EXP. JOINT PLAN VIEW (TYP.)
EXP. PIER 4, BRIDGE 'D'



REHAB. EXP. JOINT PLAN VIEW (TYP.)
PIERS 4, 8, 12, 16 BRIDGE 'C'
PIERS 8, 12, 16 BRIDGE 'D'



REHAB. EXP. JOINT PLAN VIEW (TYP.)
PIER NO. 20



PARAPET AT PIER NO. 20

BAR LIST (BRIDGE 'D', PIER NO. 4) EPOXY COATED				
MARK	NO.	SIZE	FORM	LENGTH
(A) D1	16	#6	STR.	40'-9"
(B) D2	16	#6	STR.	25'-7"
(A) EP	8	#5	BNT.	5'-5"
(B) EP	8	#5	BNT.	5'-5"
(A) F1	8	#8	BNT.	8'-8"
(B) F1	6	#8	BNT.	8'-8"
(A) F2	8	#4	STR.	5'-6"
(B) F2	6	#4	STR.	5'-6"
(A) F3	1	#4	STR.	26'-11"
(B) F3	1	#4	STR.	26'-11"
(A) F4	1	#8	STR.	26'-7"
(B) F4	1	#8	STR.	26'-7"
(A) PR	6	#5	BNT.	5'-0"
(B) PR	6	#5	BNT.	5'-0"
(A) U1	64	#4	BNT.	3'-3"
(B) U1	62	#4	BNT.	3'-3"

(A) PHASE 1
(B) PHASE 2

QUANTITIES (BRIDGE 'D', PIER NO. 4)		
ITEM	UNIT	TOTAL
SEALED EXPANSION JOINT	L.F.	70.00
MECHANICAL SPLICES	EA.	14.00
STRUCTURAL STEEL	LB.	98.00
CLASS AA CONCRETE	C.Y.	11.60
EPOXY COATED REINFORCING STEEL	LB.	2,020.00
SEALER CRACK PREPARATION	L.F.	106.00
SEALER RESIN	GAL.	0.70

BAR LIST (PIERS 4, 8, 12, 16 BRIDGE 'C') PIERS 8, 12, 16 BRIDGE 'D')				
EPOXY COATED				
MARK	NO.	SIZE	FORM	LENGTH
(A) D1	16	#6	STR.	40'-9"
(B) D2	16	#6	STR.	25'-7"
(A) EP	8	#5	BNT.	5'-5"
(B) EP	8	#5	BNT.	5'-5"
(A) F1	8	#8	BNT.	8'-8"
(B) F1	6	#8	BNT.	8'-8"
(A) F2	8	#4	STR.	5'-6"
(B) F2	6	#4	STR.	5'-6"
(A) F3	1	#4	STR.	26'-11"
(B) F3	1	#4	STR.	26'-11"
(A) F4	1	#8	STR.	26'-7"
(B) F4	1	#8	STR.	26'-7"
(A) PR	6	#5	BNT.	5'-0"
(B) PR	6	#5	BNT.	5'-0"
(A) U1	64	#4	BNT.	3'-3"
(B) U1	62	#4	BNT.	3'-3"

(A) PHASE 1
(B) PHASE 2

QUANTITIES (BRIDGE 'D', PIER NO. 4)		
ITEM	UNIT	TOTAL
SEALED EXPANSION JOINT	L.F.	70.00
MECHANICAL SPLICES	EA.	14.00
STRUCTURAL STEEL	LB.	98.00
CLASS AA CONCRETE	C.Y.	11.60
EPOXY COATED REINFORCING STEEL	LB.	2,020.00
SEALER CRACK PREPARATION	L.F.	106.00
SEALER RESIN	GAL.	0.70

BAR LIST (PIER NO. 20) EPOXY COATED				
MARK	NO.	SIZE	FORM	LENGTH
(A) D1	16	#6	STR.	40'-9"
(B) D2	16	#6	STR.	25'-7"
(A) EP	8	#5	BNT.	5'-5"
(B) EP	8	#5	BNT.	5'-5"
(A) F1	8	#8	BNT.	8'-8"
(B) F1	6	#8	BNT.	8'-8"
(A) F2	8	#4	STR.	5'-6"
(B) F2	6	#4	STR.	5'-6"
(A) F3	1	#4	STR.	26'-11"
(B) F3	1	#4	STR.	26'-11"
(A) F4	1	#8	STR.	26'-7"
(B) F4	1	#8	STR.	26'-7"
(A) PR	6	#5	BNT.	5'-0"
(B) PR	6	#5	BNT.	5'-0"
(A) U1	64	#4	BNT.	3'-3"
(B) U1	62	#4	BNT.	3'-3"

(A) PHASE 1
(B) PHASE 2

QUANTITIES (PIER NO. 20)		
ITEM	UNIT	TOTAL
SEALED EXPANSION JOINT	L.F.	70.00
MECHANICAL SPLICES	EA.	14.00
STRUCTURAL STEEL	LB.	98.00
CLASS AA CONCRETE	C.Y.	11.60
EPOXY COATED REINFORCING STEEL	LB.	2,020.00
SEALER CRACK PREPARATION	L.F.	106.00
SEALER RESIN	GAL.	0.70

BRIDGE 'C' & 'D' I-44 OVER ARK. RIVER & ELWOOD AVE. DETAILS OF REPAIR (BRIDGE C & D)	TULSA COUNTY	Design	N/A	N/A
		Detail	ADG	05/16
		Check	KMS	06/16
		Squad	MAYFIELD	
	Engr.	ELYAZGI		
STATE OF OKLAHOMA	DEPARTMENT OF TRANSPORTATION	JOB/PIECE NO. 31944(04)	SHEET NO. B014	